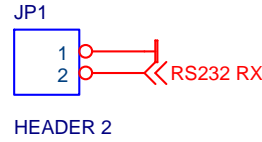
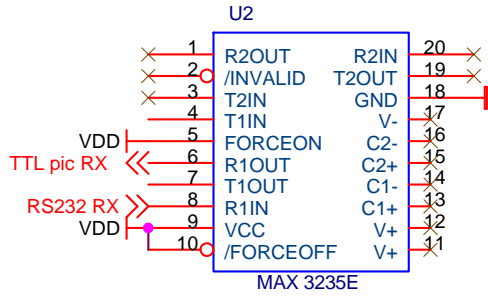
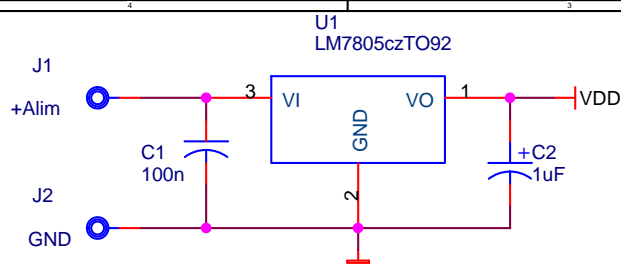
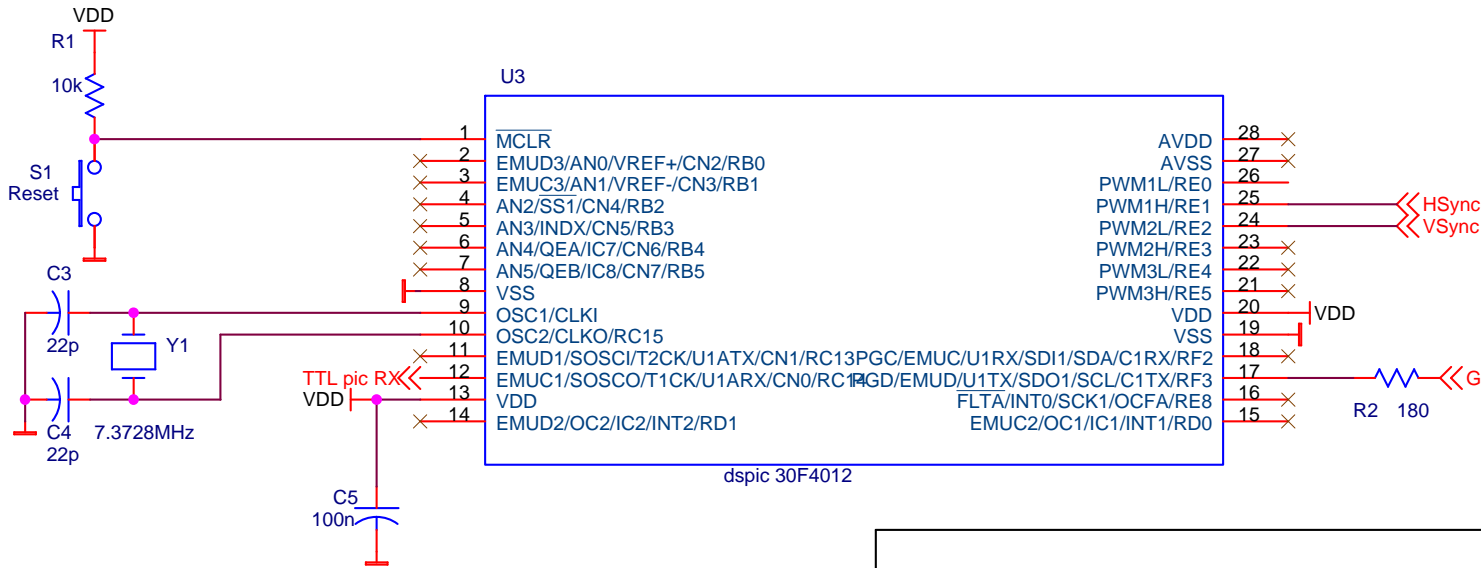
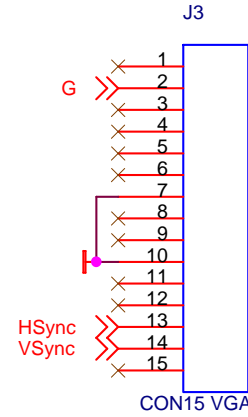


Pas d'ICD2, la programmation se fera sur une autre plate forme



Si on veut entrer un signal TTL sur l'entrée RX alors on enlève le MAX3235 de son support et on relie R1IN (pin8) à R1OUT (pin6)



Title		
VGA dspic RS232 - L. Baghli - 01 / 2008		
Size	Document Number	Rev
Customew		1.4
Date:	Friday, February 15, 2008	Sheet 1 of 1